

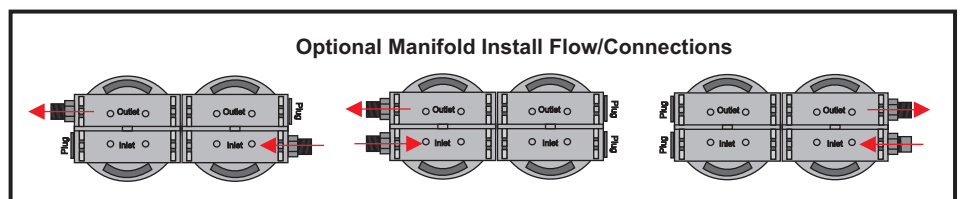
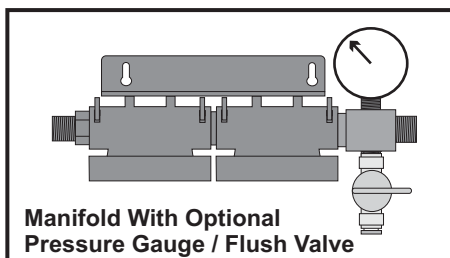
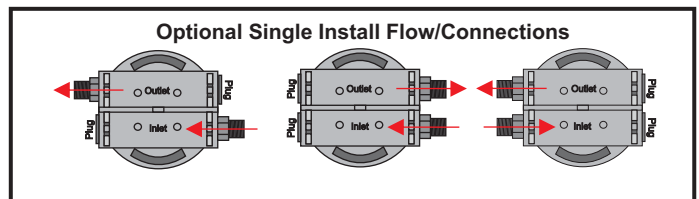
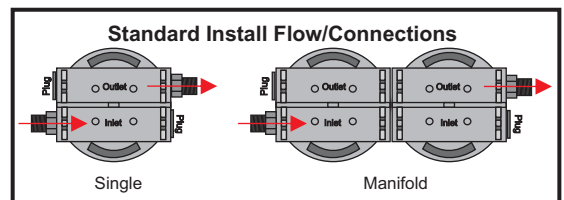
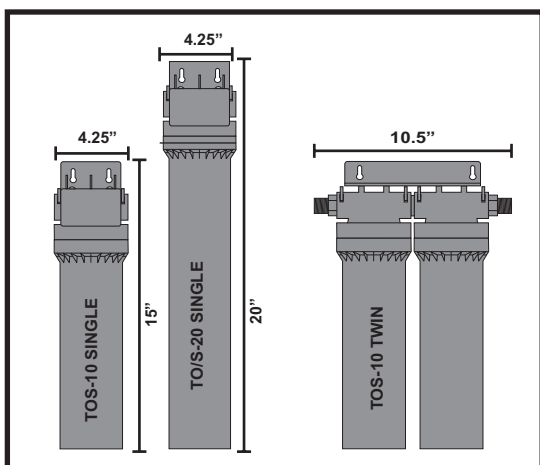
## ADVANCED ICE MACHINE FILTER SYSTEM

**SYSTEM SUMMARY - Blue Lake Advanced Ice Machine Filter Systems** supply excellent sediment filtration, chlorine removal, and patented scale control technology for ice machines ensuring your customers are served clear great tasting ice while protecting the equipment from costly mineral scale deposits.

- \* Do not use with water that is microbiologically unsafe or unknown quality without adequate disinfection before or after the system.
- \* Unit should be installed in compliance with state and local laws and regulations.
- \* Install System on Cold-Water line only. Water temperature must not exceed 100°F (37°C).
- \* Do not solder plumbing connections when attached to the filter head or manifold as heat will damage the filter head and/or fittings.
- \* Do not over-tighten fittings into filter connections. Always use a back up wrench when making connections when applicable.
- \* Mount the system where the filters are easily accessible for filter replacement.
- \* **Do not mount the system over electrical wiring or where water may cause damage.**

### FILTER SYSTEM INSTALLATION INSTRUCTIONS

1. Unpack the water filter system.
2. Locate the filter system where the filter cartridges can be easily reached to facilitate filter change outs. Ensure that there is 2.5" of clearance below the filter cartridges to allow for filter change.
3. Secure filter head and bracket (single) or manifold head assembly to the wall using appropriate wall anchors.
4. Turn off water supply. **Install filter system on cold water line only.**
5. Make the connections to fittings taking care not to over tighten. Connection fittings are removable to allow for various inlet/outlet flow configurations. The unit is shipped with the fittings in the head for the **Standard Flow Configuration**. Fittings can be removed by inserting a flathead screwdriver into the slot on the U-Clip and pulling up or using pliers to grasp the U-Clip and pulling up.
6. Install each of the cartridges into the manifold by lining up the grooves in the filter head with the ears on the filter cartridge then push upward into the head until it seats, then turn clockwise ¼ turn until the filter stops.
7. Slowly turn on water supply and check for leaks. Flush systems for 3 minutes prior to use.



### System Specifications

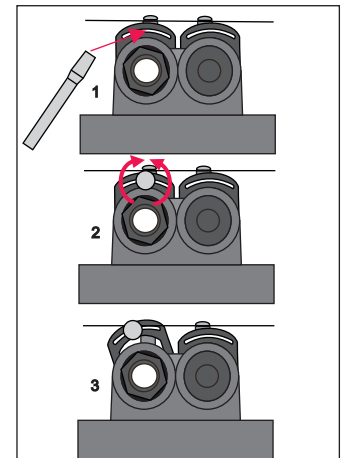
Model Number	Chlorine Removal Capacity / Gallons	Rated Service Flow Rate	Oper. Pressure Min. / Max.	Oper. Temp. Min. / Max.	Connection Size	Replacement Cartridge	Dimensions H" x W" x D"
TOS10 SINGLE	10,000	1.75 gpm	20 psi / 125 psi	35°F / 100°F	3/8" FPT, MPT, or QD PUSH	TOS-10	15.25 x 5 x 5
TOS16 SINGLE	15,000	2.00 gpm	20 psi / 125 psi	35°F / 100°F	3/8" FPT, MPT, or QD PUSH	TOS-16	21.15 x 5 x 5
TOS10 TWIN	20,000	3.50 gpm	20 psi / 125 psi	35°F / 100°F	1/2" MPT	TOS-10	15.75 x 9.25 x 5
TOS16 TWIN	30,000	4.00 gpm	20 psi / 125 psi	35°F / 100°F	1/2" MPT	TOS-16	20.85 x 9.25 x 5

If pressure is anticipated to exceed this rating, install a pressure reducing valve prior to the unit.

### INSERTING & REMOVING FITTINGS/CONNECTORS

All filter systems will be shipped with specified connection fittings attached in the standard Left to Right water flow configurations unless otherwise specified. To relocate fittings to a different configuration:

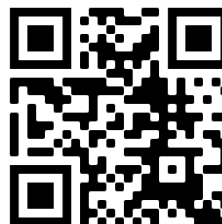
1. Insert the end of a flathead screwdriver (1/4"-1/2" head width) into the top slit of the Locking U-Clip.
2. Gently and slowly rotate the screwdriver so one of the U-Clip legs dislodges from the locking slot. It may take a little back and forth rotation to get the U-Clip to dislodge.
3. Remove the fitting and push it completely into the desired port then reinsert the U-Clip into the locking slot by pushing it firmly straight down. A little tap may be required to seat it correctly.



### Parts List

401800 - Head  
 507087 - Mounting Bracket Single  
 507052 - Mounting Bracket Twin  
 501805 - Union Connector  
 501807 - Union Plug  
 501803 - End Plug  
 501801 - Locking U-Clip  
 501812 - 1/2" Male NPT Fitting  
 500505 - 1/2" Cross Fitting  
 501202 - Cross Ball Valve  
 503106 - Cross Pressure Gauge  
 501814 - 3/8" Male NPT Fitting  
 501816 - 3/8" Female NPT Fitting  
 501818 - 3/8" QD Push Fitting  
 501823 - 3/8" Cross Fitting  
 502019 - Fitting Oring

TO REORDER SCAN



or visit:  
[www.bluelakefilters.com](http://www.bluelakefilters.com)